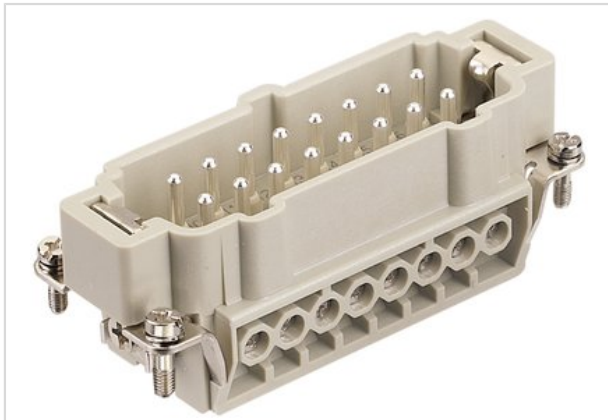


## Han 16Ex-M-s



|                    |   |
|--------------------|---|
| Part number        | 09 36 016 2601  |
| Specification      | Han 16Ex-M-s  |
| HARTING eCatalogue | <a href="https://b2b.harting.com/09360162601">https://b2b.harting.com/09360162601</a> |

### Identification

|          |                     |
|----------|---------------------|
| Category | Inserts             |
| Series   | Han <sup>®</sup> Ex |

### Version

|                    |   |
|--------------------|---|
| Termination method | Screw termination   |
| Gender             | Male  |
| Size               | 16 B  |
| Number of contacts | 16  |
| PE contact         | Yes   |
| Details            | ATTENTION! Only to be used with Han <sup>®</sup> Ex hoods and housings! |

### Technical characteristics

|                         |                              |
|-------------------------|------------------------------|
| Conductor cross-section | 0.75 ... 2.5 mm <sup>2</sup> |
| Rated current           | 16 A                         |
| Rated voltage           | 90 V                         |
| Insulation resistance   | ≥10 <sup>10</sup> Ω          |
| Contact resistance      | ≤1 mΩ                        |
| Limiting temperature    | -20 ... +40 °C               |
| Tightening torque       | 0.5 Nm                       |
| Mating cycles           | ≥500                         |

### Material properties

|   |                          |
|---|--------------------------|
| Material (insert)                         | Polycarbonate            |
| Colour (insert)                           | RAL 7032 (pebble grey)   |
| Material (contacts)                       | Copper alloy             |
| Surface (contacts)                        | Silver plated            |
| Material flammability class acc. to UL 94 | V-0                      |
| RoHS                                      | compliant with exemption |



Pushing Performance

## Material properties

|                             |  |
|-----------------------------|--|
| RoHS exemptions             | 6c: Copper alloy containing up to 4 % lead by weight |
| ELV status                  | compliant with exemption                             |
| China RoHS                  | 50   |
| REACH Annex XVII substances | No   |
| REACH ANNEX XIV substances  | No   |
| REACH SVHC substances       | Yes  |
| REACH SVHC substances       | Lead   |

## Commercial data

|                                |          |
|--------------------------------|----------|
| Packaging size                 | 1        |
| Net weight                     | 86.6 g   |
| Country of origin              | Germany  |
| European customs tariff number | 85389099 |