

Wall mounting appliance inlet - housing dimensions 87x64



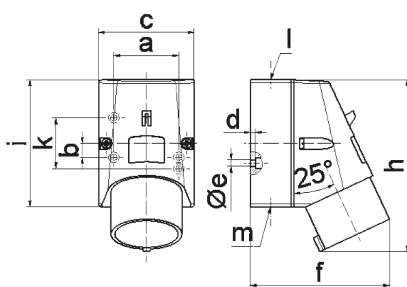
Product description	
BALS-Prd.-Nr	245
EAN	4024941002455
Product category	Wall mounting appliance inlet
Current	16A
Number of poles	3p
Arrangement of phases	2P+PE
Position of earth contact	6 h
Voltage	200 - 250V~

Product description	
Frequency	50/60Hz
Protection degree	IP44
Colour code	blue RAL 5015
Colour of appliance	Housing top blue RAL 5015, Housing bottom grey RAL 7035
Connection design	with screw terminal
Maximum conductor size	2,5 qmm
Cable entry	top entry M20
Height	122mm
Width	64mm
Depth	93mm
Dimension of enclosure	87x64 mm (HxW)
Material of enclosure	Polyamide
Contacts	the contact carrier is made of polyamide, the contacts are brass

Additional technical properties	
	The cable entry is one at top open and one at bottom and one rear side closed

Logistics data	
Weight/pcs	0.169 kg / Piece
Packaging	Bag
Content amount	1 ST

Logistics data	
EAN	4024941002455
Length	93 mm
Width	64 mm
Height	122 mm
Weight	0.17 kg
Volume	726.144 ccm
Packaging	Carton
Content amount	10 ST
EAN	4024941970518
Length	245 mm
Width	177 mm
Height	185 mm
Weight	1.823 kg
Volume	7,140 ccm



5 MB 47

Ampere Polzahl	16 3	16 4	16 5
a	51,0	59,0	59,0
b	-	11,0	11,0
c	64,0	75,0	75,0
d	4,0	4,0	4,0
e ø	4,1	5,1	5,1
f	93,0	106,0	110,0
h	122,0	135,0	135,0
i	87,0	100,0	100,0
k	40,0	-	-
l	M20	M20	M20
m	für M20	für M20	für M20
Leiter mm ² min	1	1	1
Leiter mm ² max	2,5	2,5	2,5