

wall mounting appliance inlet - housing dimensions 87x64



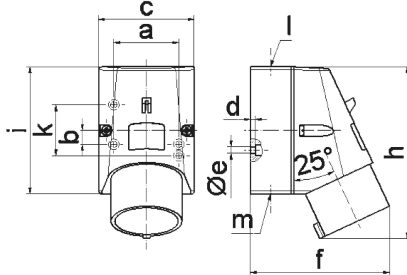
| Product description | |
|---------------------------|-------------------------------|
| BALS-Prd.-Nr | 245 |
| EAN | 4024941002455 |
| Product category | Wall mounting appliance inlet |
| Current | 16A |
| Number of poles | 3p |
| Arrangement of phases | 2P+PE |
| Position of earth contact | 6 h |
| Voltage | 200 - 250V~ |
| Frequency | 50/60Hz |

| Product description | |
|------------------------|--|
| Protection degree | IP44 |
| Colour code | blue RAL 5015 |
| Colour of appliance | Housing bottom grey RAL 7035, Housing top blue RAL 5015 |
| Connection design | with screw terminal |
| Maximum conductor size | 2,5 qmm |
| Cable entry | top entry M20 |
| Height | 122mm |
| Width | 64mm |
| Depth | 93mm |
| Dimension of enclosure | 87x64 mm (HxW) |
| Material of enclosure | Polyamide |
| Contacts | The contact carrier is made of polyamide, The contacts are brass |

| Additional technical properties | |
|---------------------------------|---|
| | The cable entry is one at top open and one at bottom and one rear side closed |

| Logistics data | |
|----------------|------------------|
| Weight/pcs | 0.169 kg / Piece |
| Packaging | Bag |
| Content amount | 1 ST |
| EAN | 4024941002455 |

| Logistics data | |
|----------------|---------------|
| Length | 93 mm |
| Width | 64 mm |
| Height | 122 mm |
| Weight | 0.17 kg |
| Volume | 726.144 ccm |
| Packaging | Carton |
| Content amount | 10 ST |
| EAN | 4024941970518 |
| Length | 245 mm |
| Width | 177 mm |
| Height | 185 mm |
| Weight | 1.823 kg |
| Volume | 7,140 ccm |



5 MB 47

| Ampere | 16 | 16 | 16 | | | |
|----------------------------|---------|---------|---------|--|--|--|
| Polzahl | 3 | 4 | 5 | | | |
| a | 51,0 | 59,0 | 59,0 | | | |
| b | - | 11,0 | 11,0 | | | |
| c | 64,0 | 75,0 | 75,0 | | | |
| d | 4,0 | 4,0 | 4,0 | | | |
| e ø | 4,1 | 5,1 | 5,1 | | | |
| f | 93,0 | 106,0 | 110,0 | | | |
| h | 122,0 | 135,0 | 135,0 | | | |
| i | 87,0 | 100,0 | 100,0 | | | |
| k | 40,0 | - | - | | | |
| l | M20 | M20 | M20 | | | |
| m | für M20 | für M20 | für M20 | | | |
| Leiter mm ² min | 1 | 1 | 1 | | | |
| Leiter mm ² max | 2,5 | 2,5 | 2,5 | | | |