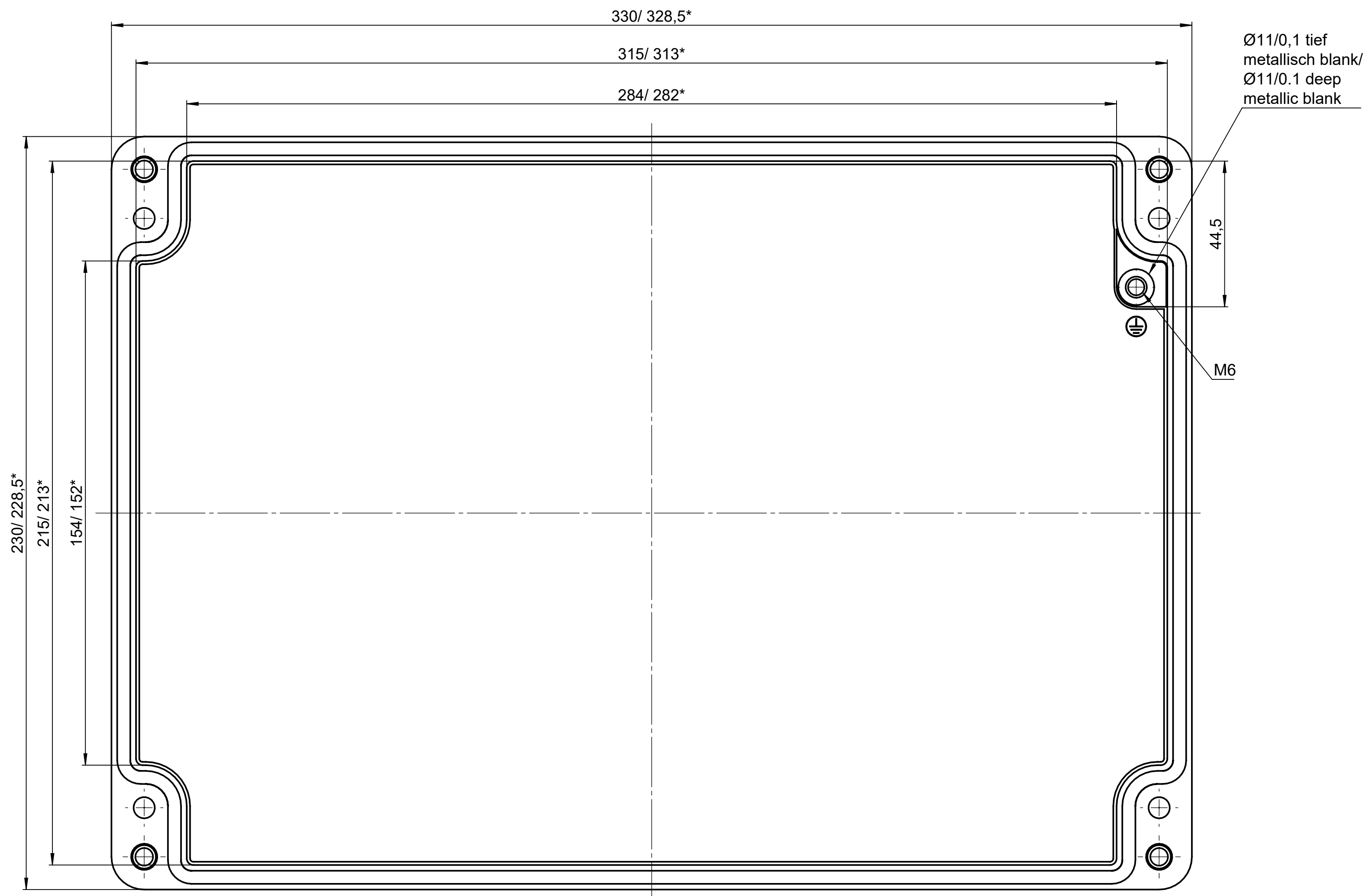
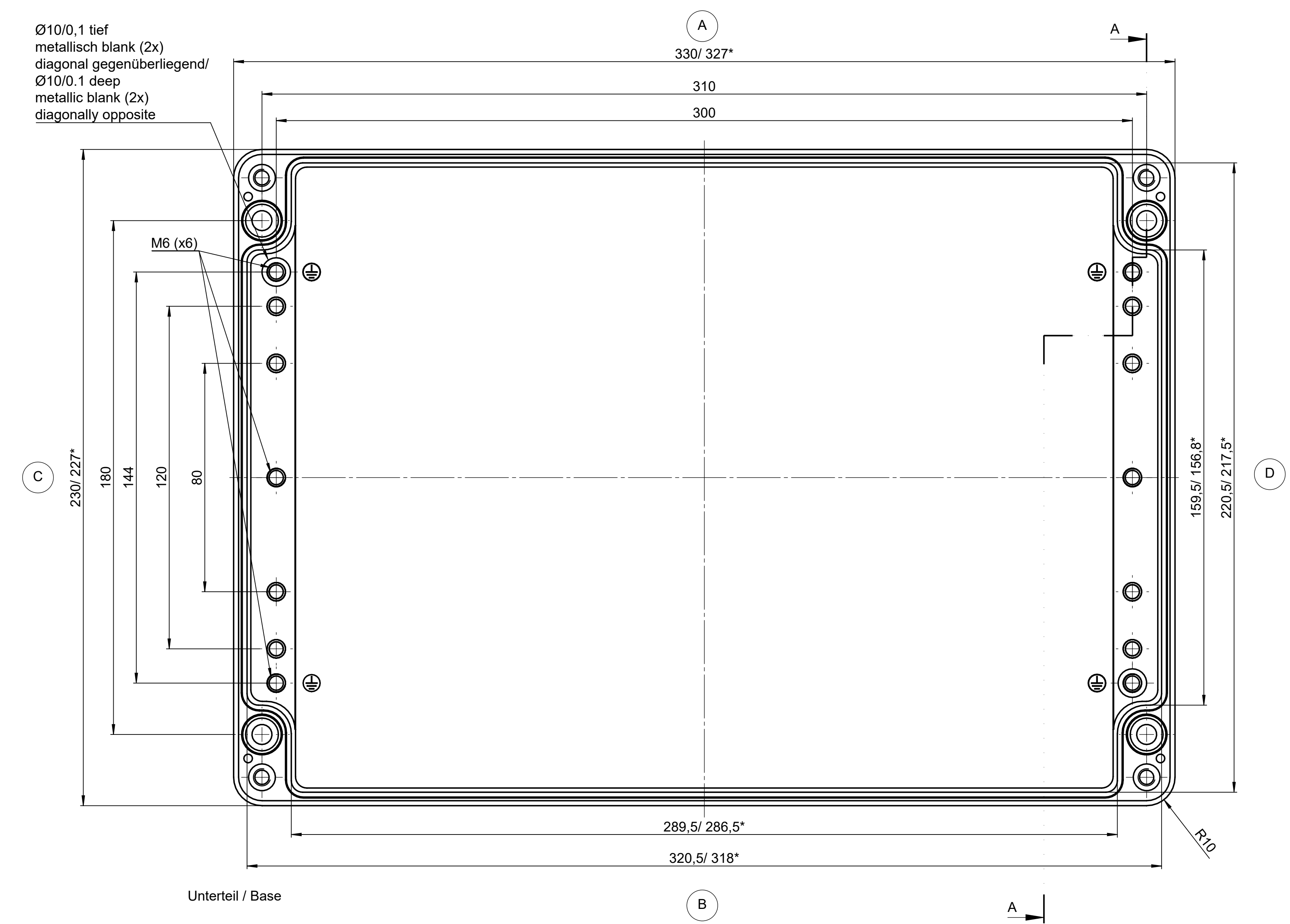


All rights reserved. No copies
 from this drawing may be made
 or reproduced in any way
 without the written permission
 of the manufacturer.

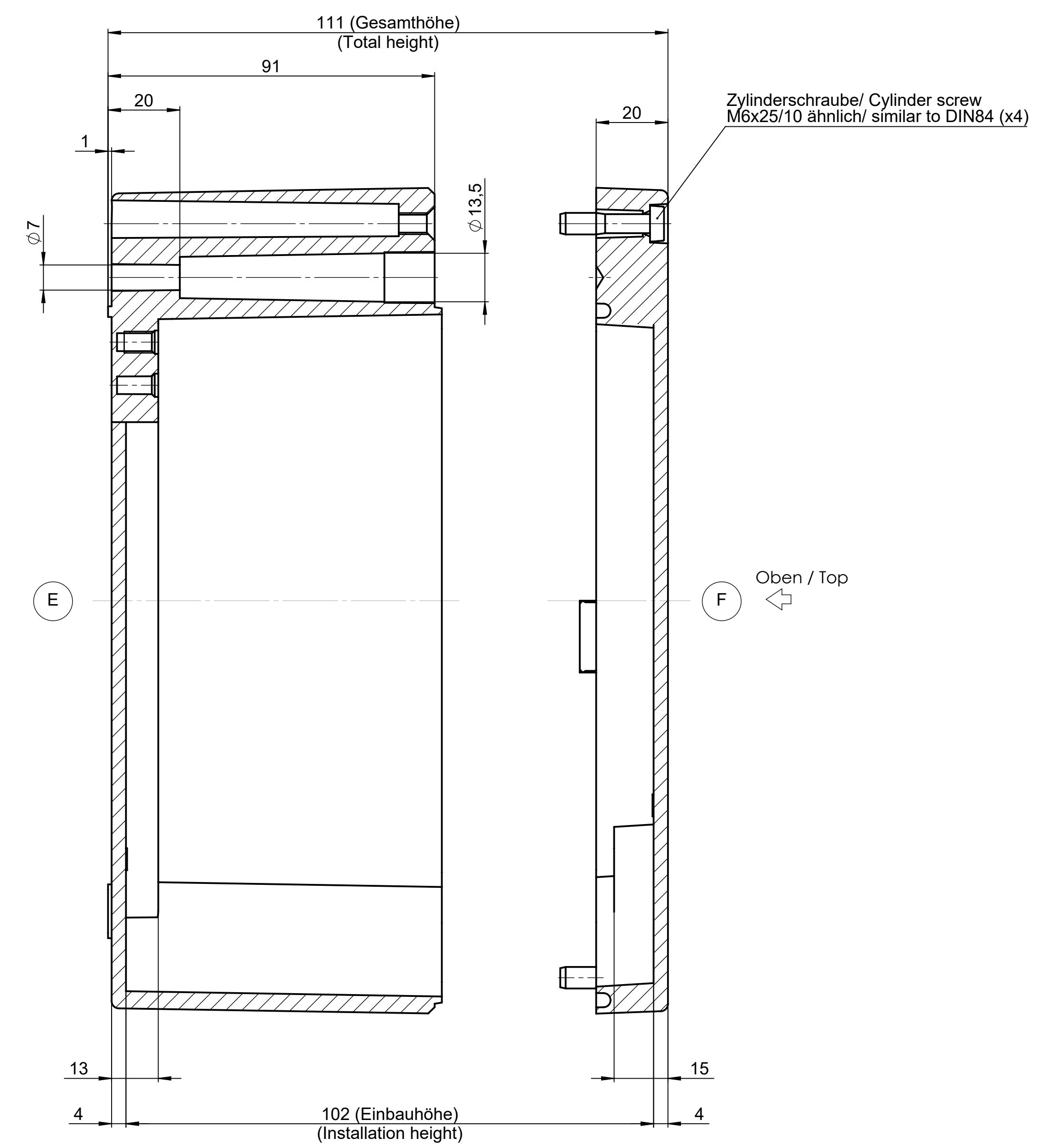


Deckel / Lid

* = Mass durch Formkonizität nach unten verringert.
 Freimass - Toleranz nach GTA 13/5 - DIN 1688
 * = Dimensions reduced in the lower part by mould incline
 General tolerances according to GTA 13/5 - DIN 1688



Unterteil / Base



Index		Änderung/Modification		Datum/Date		Name		Projekt-Nr./Project-no.	
ROSE		Systemtechnik GmbH		09.11.16		D.Mac		3.65kg	
32457		Porta Westfalica		27.01.21		A.Hel		Gewicht/Weight	
1:1		Aluminium Gehäuse						Material	
DIN A0		Aluminium enclosure						DIN 1688-GTA 13/5	
								KAT01.233311	