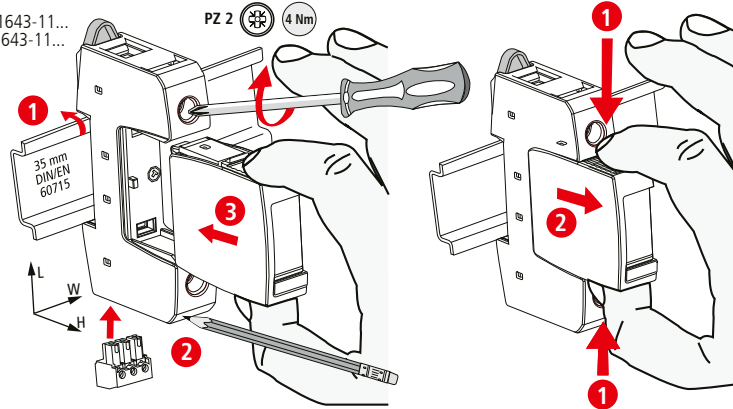


DEHNguard S ACI DG S ACI 275 FM

- DE Einbauanleitung
- GB Installation instructions
- IT Istruzioni di montaggio
- FR Instructions de montage
- NL Montagehandleiding
- ES Instrucciones de montaje
- PT Instruções de montagem
- DK Monteringsvejledning
- SE Monteringsanvisning
- FI Asennusohje
- GR Οδηγίες συναρμολόγησης
- PL Instrukcja montażu
- CZ Montážní návod
- TR Kurulum Talimatları
- RU Инструкция по монтажу
- CN 安装说明
- HU Szerelési útmutató
- JP 設置説明書



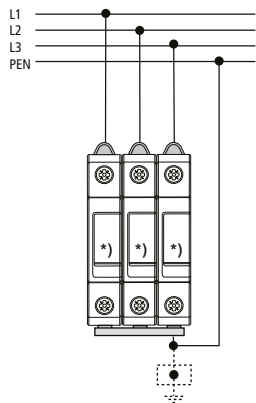
II IEC 61643-11...
2 EN 61643-11...



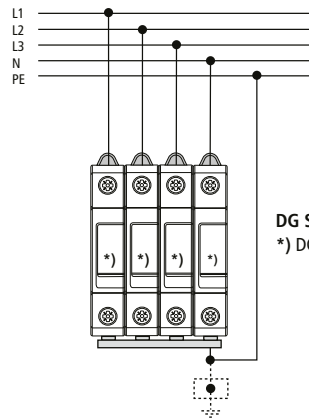
	DG S ACI 275 FM
	DG MOD ACI 275
$U_N / Tol.: \pm 10\%$	230 V (50/60 Hz)
U_c	275 V (50/60 Hz)
I_{SCCR}	25 kA _{rms}
θ	-40°C ... + 80°C
ϕ	5% ... 95%
I_{PE}	< 5 μ A
IP 1)	20
L x W x H	90 mm x 18 mm x 77 mm

	12 mm	12 mm	12 mm
min. \square L, N, \perp			1,5 mm ²
max. \square L, N, \perp	25 mm ²		35 mm ²
\square	16 mm ² Cu		$\geq 15,5$ mm

TN-C

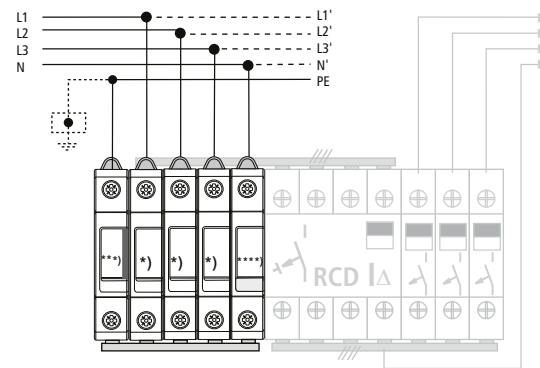


TN (-C) -S

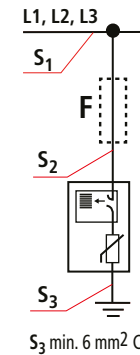


DG S ACI 275 FM
*) DG MOD ACI 275

TT 3+1



DG S ACI 275 FM
*) DG MOD ACI 275
***) DGP C S (FM)
****) DK 25



S_1 / mm^2	max. Ik	S_2 / mm^2	S_3 / mm^2	
$\begin{matrix} \text{mm}^2 \\ \text{X} \end{matrix} - \begin{matrix} \text{mm}^2 \\ \text{X} \end{matrix} \text{ 3)}$	$\leq 25 \text{ kA}$	$\geq 6 \text{ mm}^2 \text{ 2)}$	$\geq 6 \text{ mm}^2$	
$\begin{matrix} \leq 25 \text{ mm}^2 \\ \leq 35 \text{ mm}^2 \end{matrix}$	$\leq 25 \text{ kA}$	$= S_1$	$= S_1$ min. 6 mm ²	

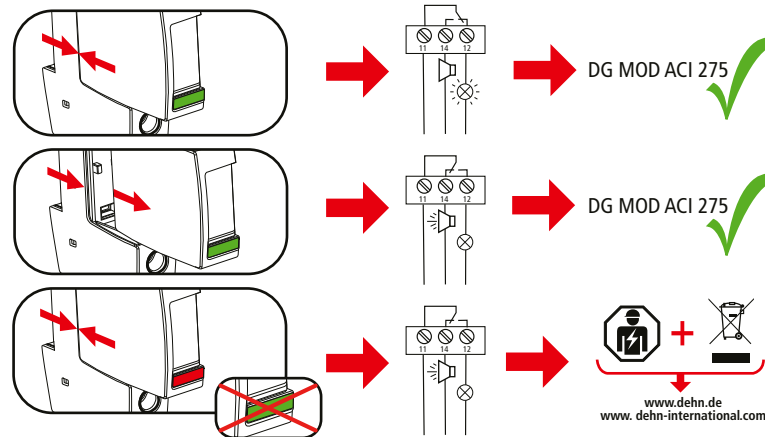
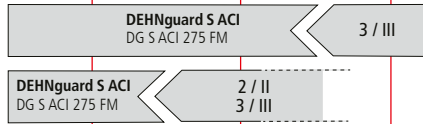
LPZ 0_A

LPZ 0_B

LPZ 1

LPZ 2

LPZ 3



DEHNguard S ACI DG S ACI 275 FM	
	U_N / I_N AC: 250 V / 0,5 A DC: 250 V / 0,1 A 125 V / 0,2 A 75 V / 0,5 A
max. 1,5 mm ²	

