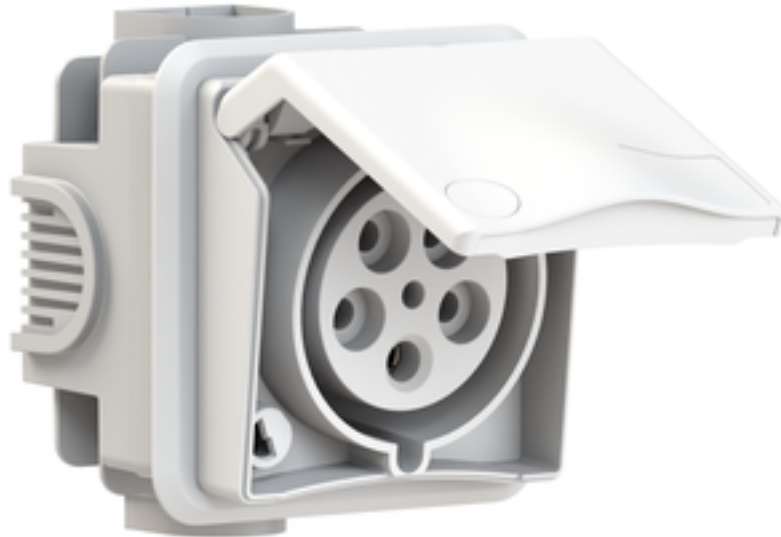


flush mounting socket outlet - housing dimensions 90x90



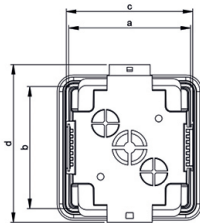
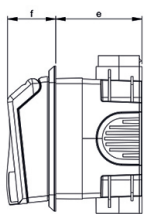
Product description	
BALS-Prd.-Nr	1412
EAN	4024941222334
Product category	Flush mounting socket outlet
Current	32A
Number of poles	5p
Arrangement of phases	3p+N+PE
Position of earth contact	6 h
Voltage	200/346 - 240/415V~
Frequency	50/60Hz

Product description	
Protection degree	IP44
Colour code	red RAL 3000
Colour of appliance	white similar to RAL 9016
Connection design	with screw terminal
Maximum conductor size	10,0 qmm
Cable entry	other
Height	115mm
Width	105mm
Depth	99mm
Dimension of enclosure	90x90 mm
Material of enclosure	ABS + Polycarbonate
Contacts	the contacts are brass nickel plated

Additional technical properties	
	flush mounting (incl. flush socket), hinged lid with labelling field (optional: key lock), Architecture programme TH

Logistics data	
Weight/pcs	0.373 kg / Piece
Packaging	Bag
Content amount	1 ST
EAN	4024941222334

Logistics data	
Length	99 mm
Width	105 mm
Height	115 mm
Weight	0.374 kg
Volume	1,195.425 ccm
Packaging	Carton
Content amount	6 ST
EAN	4024941222631
Length	370 mm
Width	218 mm
Height	125 mm
Weight	2.411 kg
Volume	9,329.4 ccm



Ampere Poles	16 3	16 4	16 5	32 5	Schutzk. Domestic
a	90,0	90,0	90,0	90,0	90,0
b	90,0	90,0	90,0	90,0	90,0
c	92,0	92,0	92,0	92,0	92,0
d	115,0	115,0	115,0	115,0	115,0
e	64,0	64,0	64,0	64,0	64,0
f	35,0	35,0	35,0	35,0	35,0
Cond. mm ² min.	1,0	1,0	1,0	2,5	1,0
Cond. mm ² max.	4,0	4,0	4,0	10	2,5

4MB464

