

1
Lieferumfang: **STX V1 RJ45-Steckerset Cat.6**
2

J80026A0005

J80026A0009

J80026A0006

J80026A0010

3
Lieferumfang: **STX V4 RJ45-Steckerset Cat.6**
4

J80026A0013

J80026A0014

5
Lieferumfang: **STX V14 RJ45-Steckerset Cat.6**

J80026A0019

6
Lieferumfang: **STX V5 RJ45-Steckerset Cat.6**

J80026A0017

7

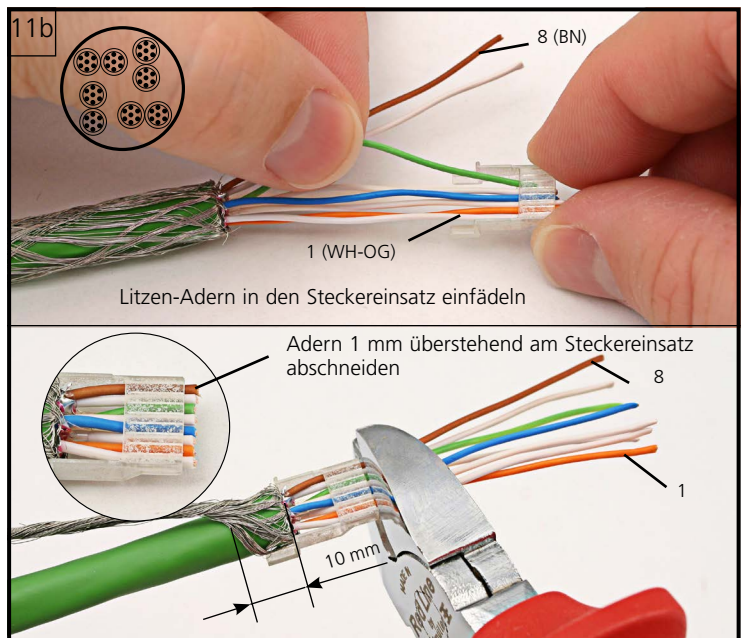
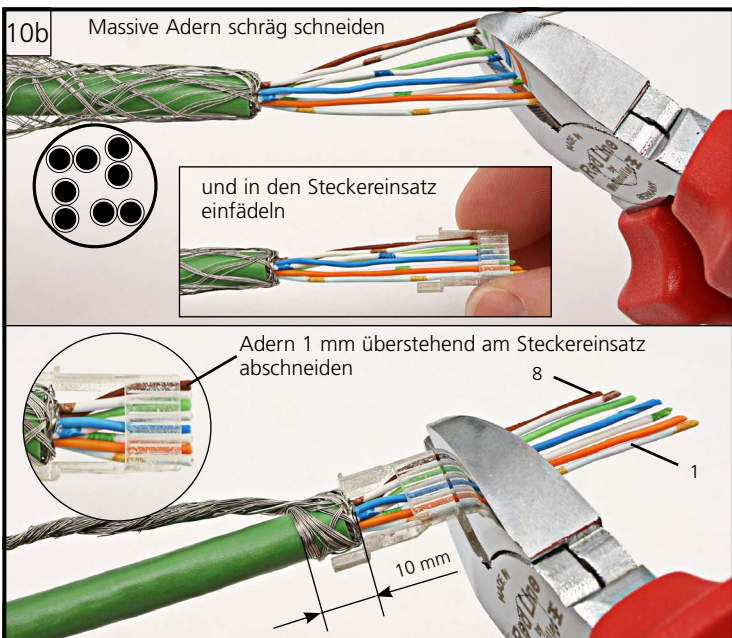
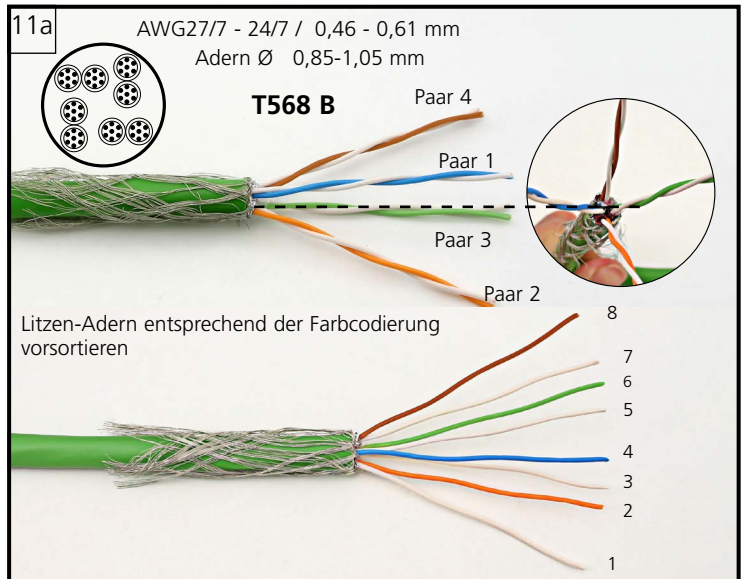
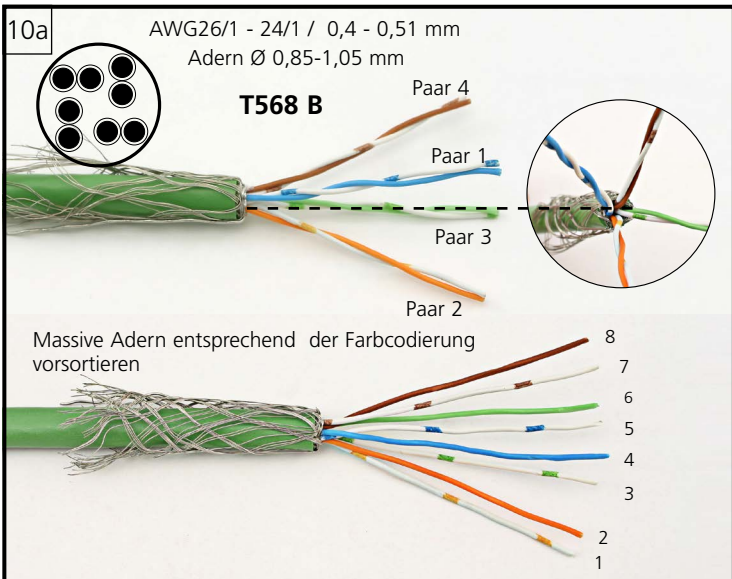
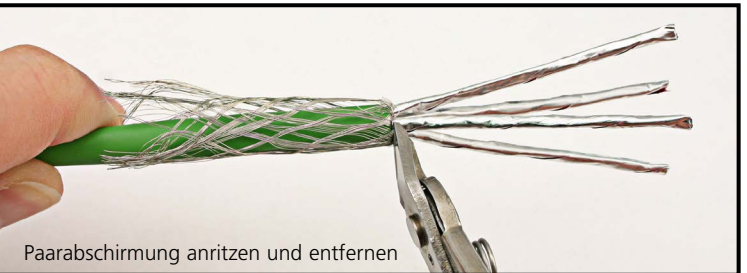
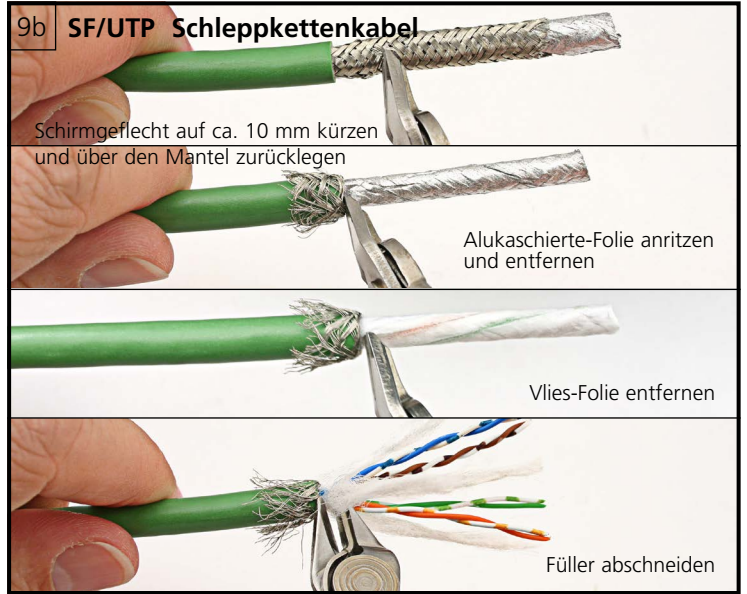
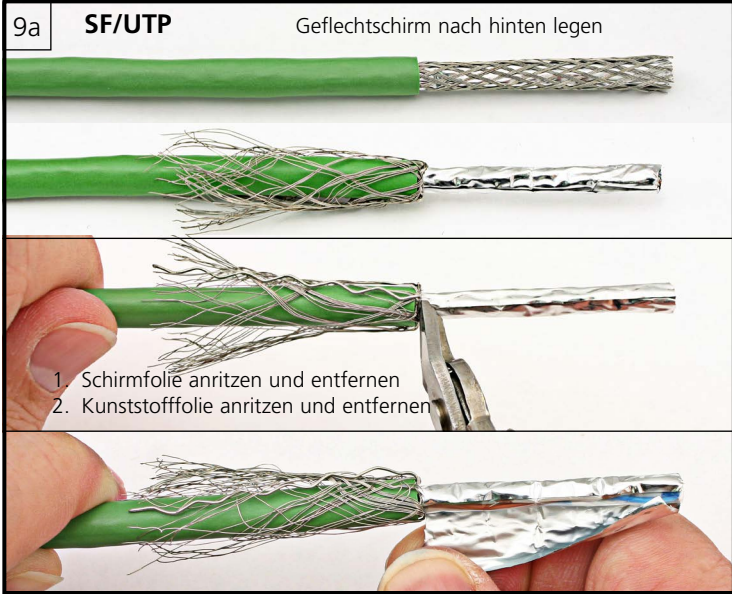
8

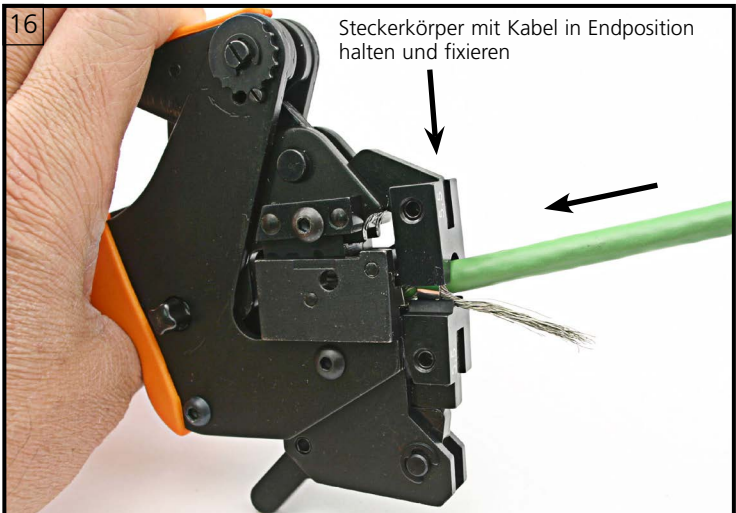
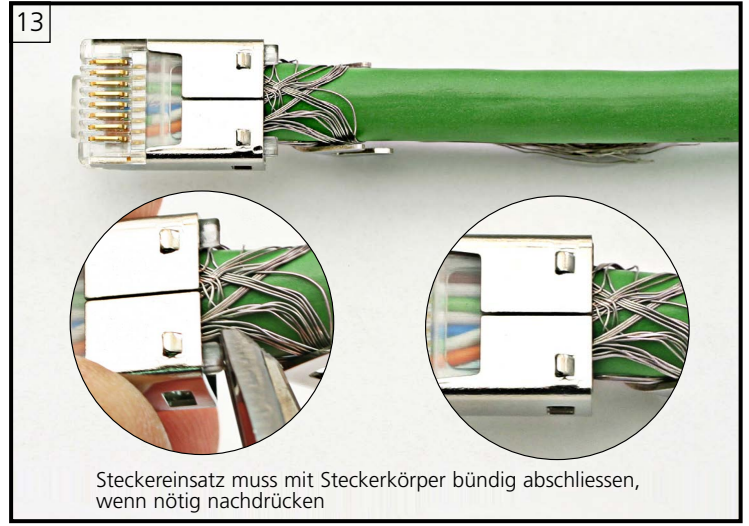
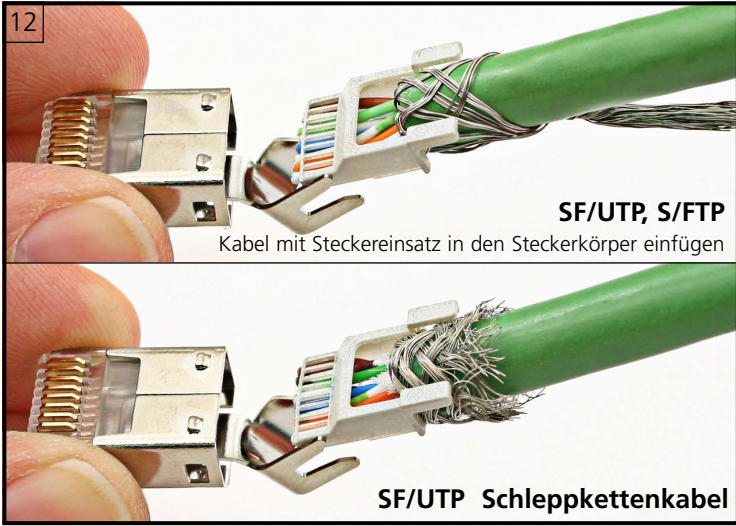
Anschlussbelegung				
RJ45 PIN Nr.	Farbcode T568		DIN 47100	Industrie
	A	B		
1	WH-GN	WH-OG	WH	YE
2	GN	OG	BN	OG
3	WH-OG	WH-GN	GN	WH
4	BU	BU	YE	-
5	WH-BU	WH-BU	GY	-
6	OG	GN	PK	BU
7	WH-BN	WH-BN	BU	-
8	BN	BN	RD	-

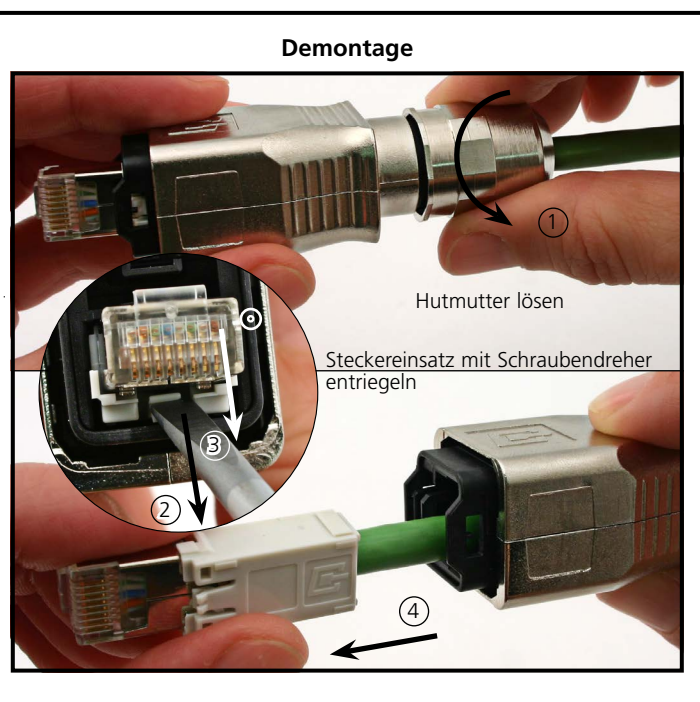
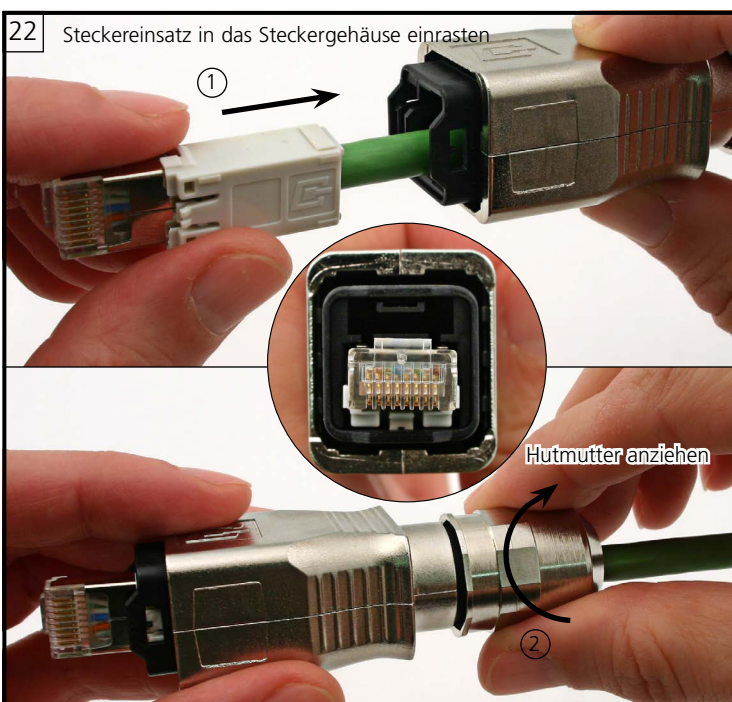
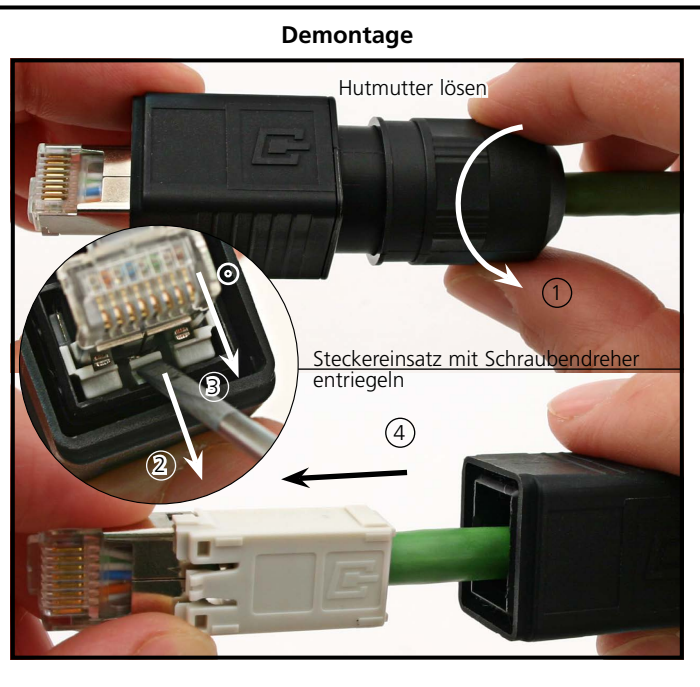
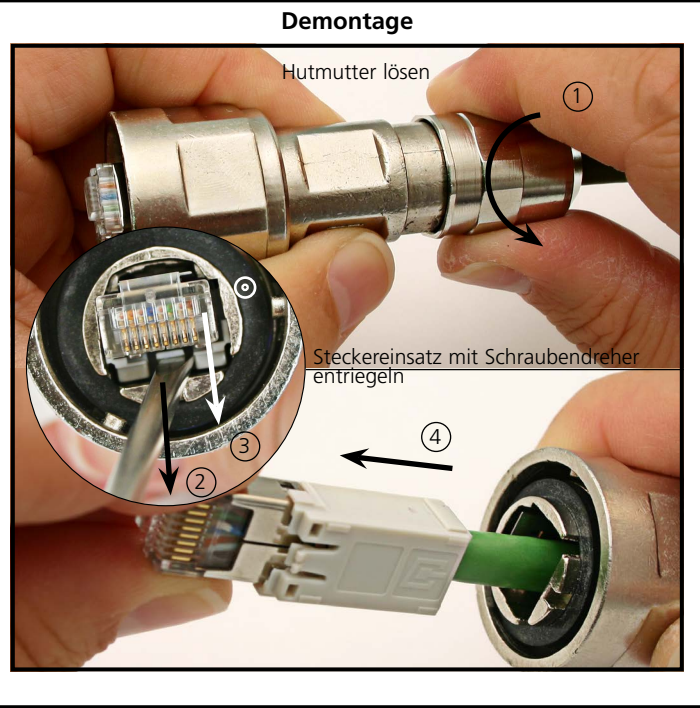
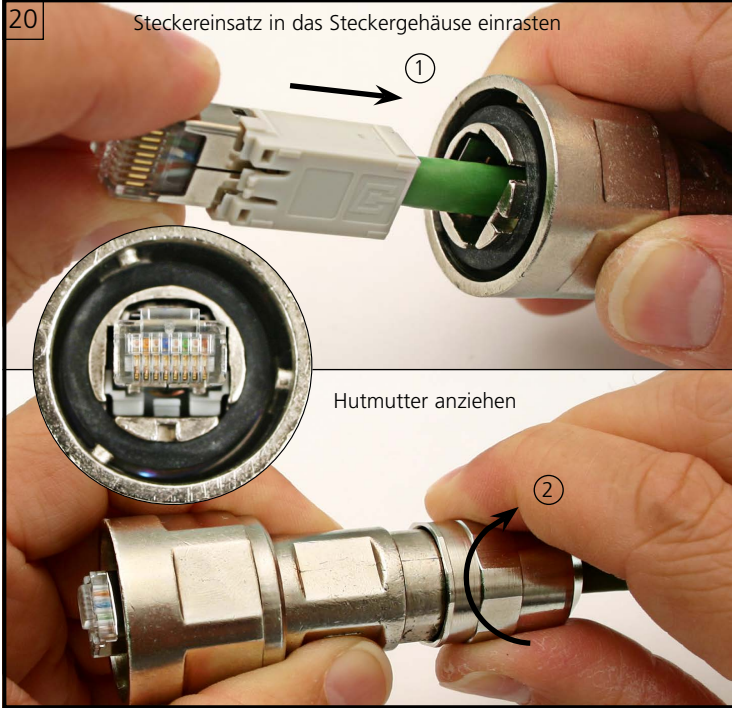
Verbindung	
1:1	1GBT gekreuzt
1-1	1-3
2-2	2-6
3-3	3-1
4-4	4-7
5-5	5-8
6-6	6-2
7-7	7-4
8-8	8-5

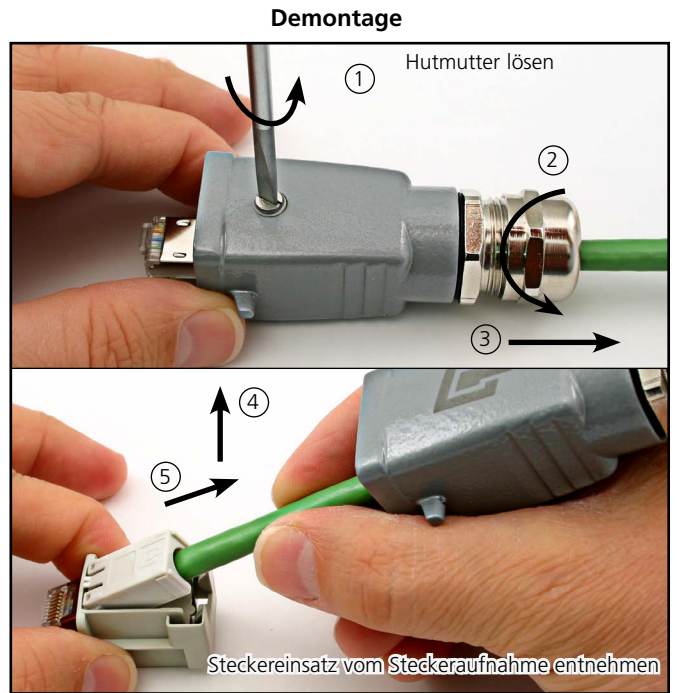
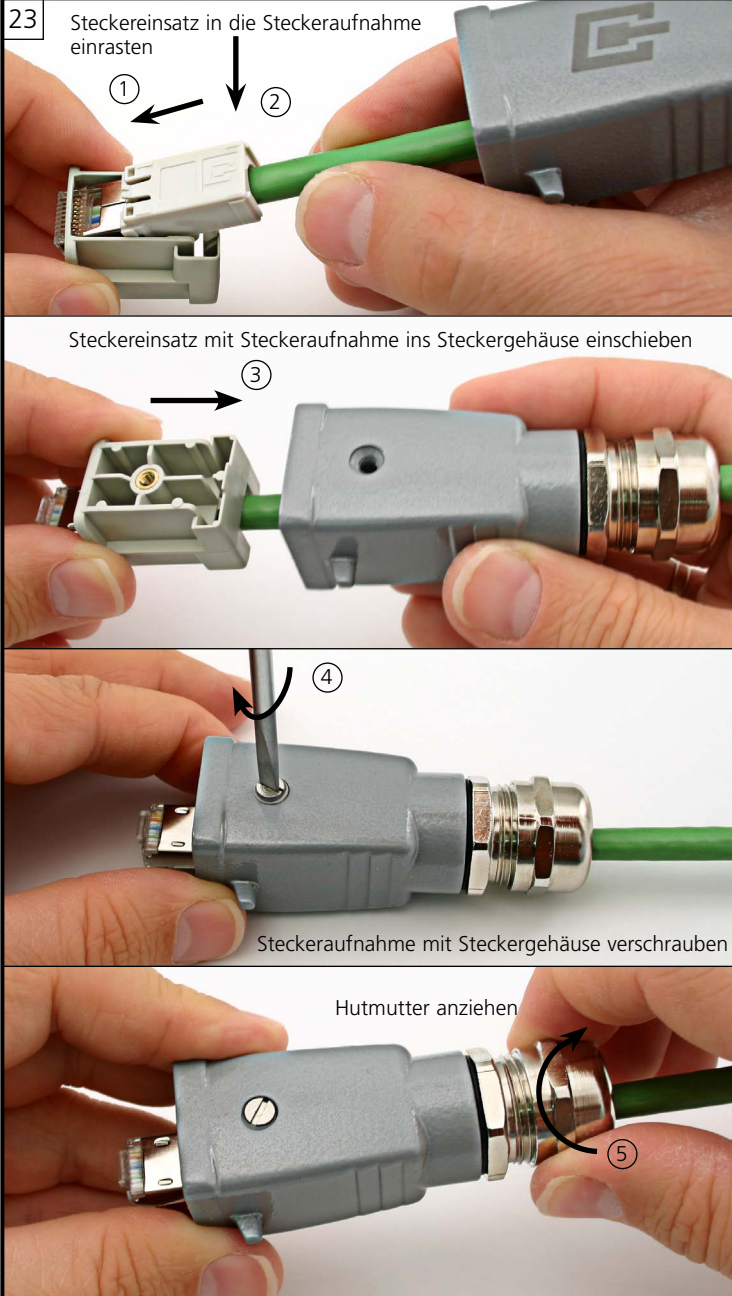
Anwendung					
RJ45 PIN Nr.	10BT/ 100BT	1Gigabit/ 10 Gigabit Ethernet	Token Ring ISDN/So	Upo/ TEL	
1	•	•			
2	•	•			
3	•	•	•		
4		•	•		•
5		•	•		•
6	•	•	•		
7		•			
8		•			

D 885030A0318b 3.02.2016© by Telegärtner • Druckfehler und technische Änderungen vorbehalten / Printing errors and technical changes reserved

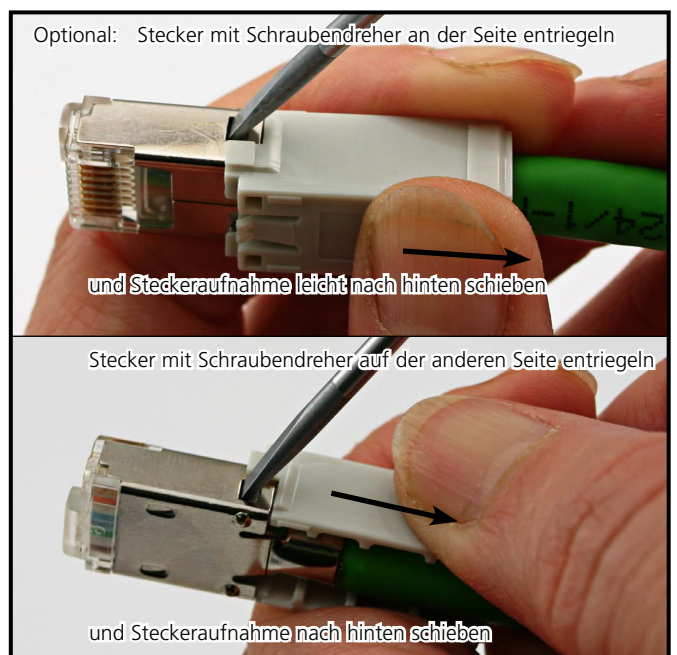








Demontage des Steckereinsatzes



STX RJ45 Plug insert

Assembly Instructions

1
Scope of delivery: **STX V1 RJ45 plug set Cat.6**
2

J80026A0005

J80026A0009

J80026A0006

J80026A0010

3
Scope of delivery: **STX V4 RJ45 plug set Cat.6**
4

J80026A0013

J80026A0014

5
Scope of delivery: **STX V14 RJ45-Steckerset Cat.6**

J80026A0019

6
Scope of delivery: **STX V5 RJ45 plug set Cat.6**

J80026A0017

7

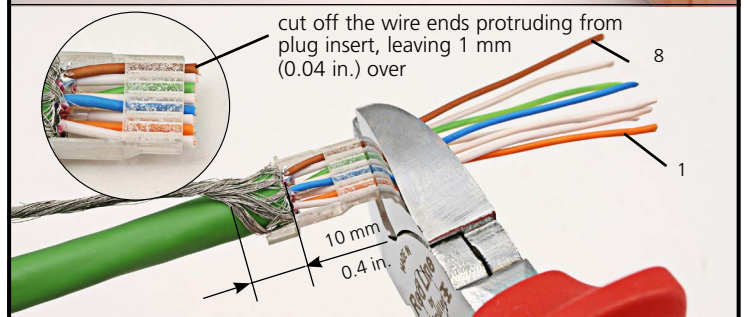
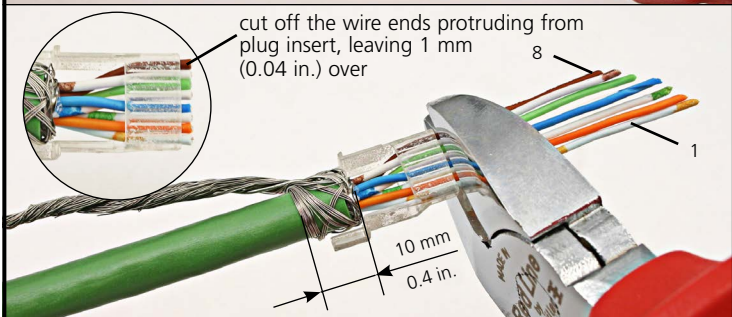
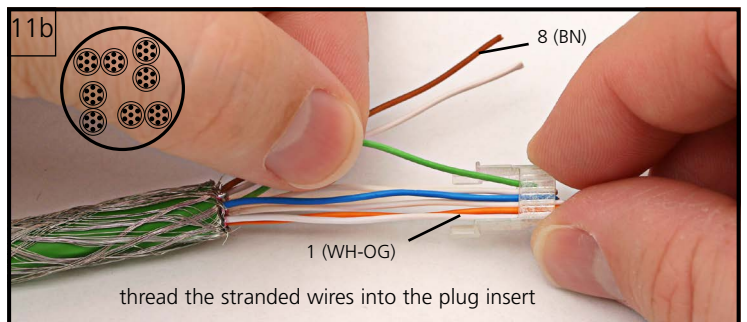
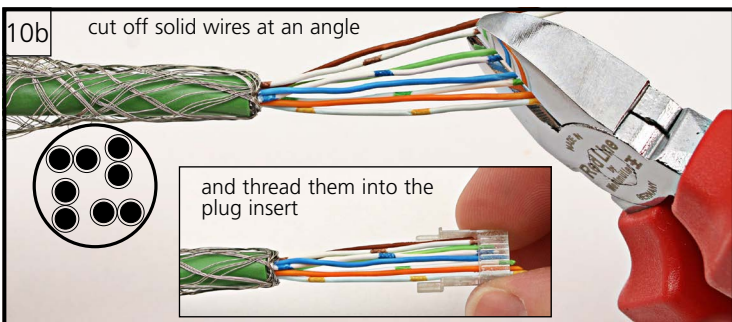
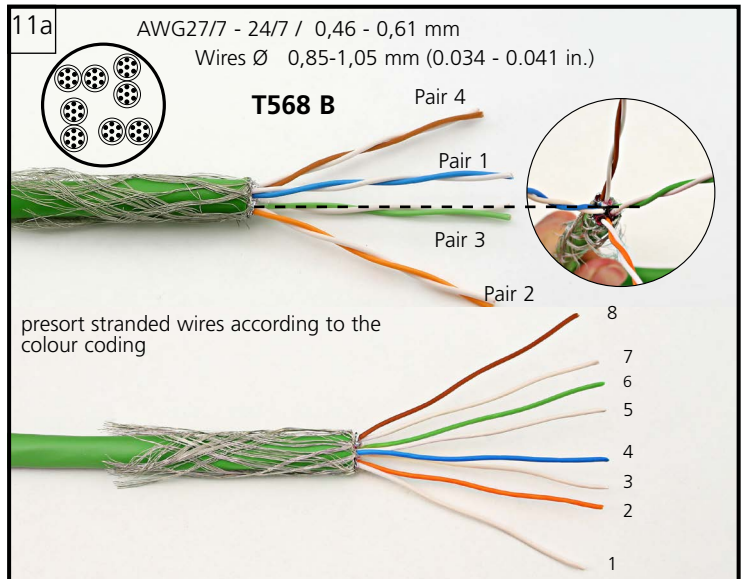
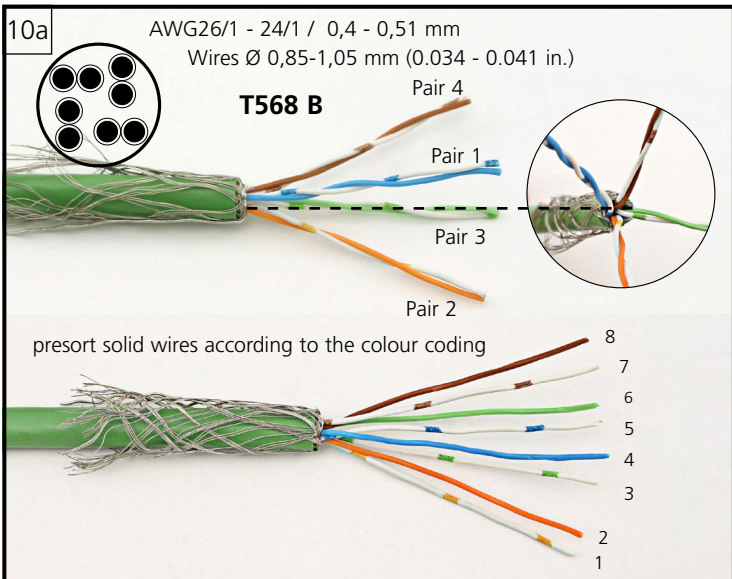
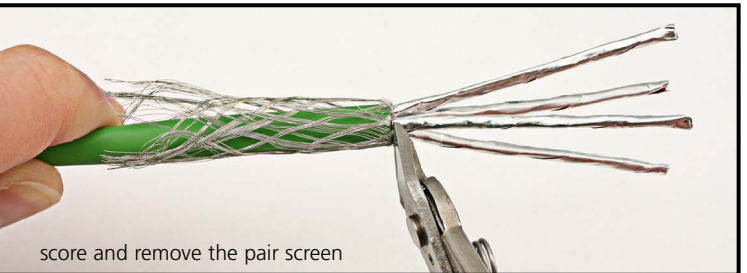
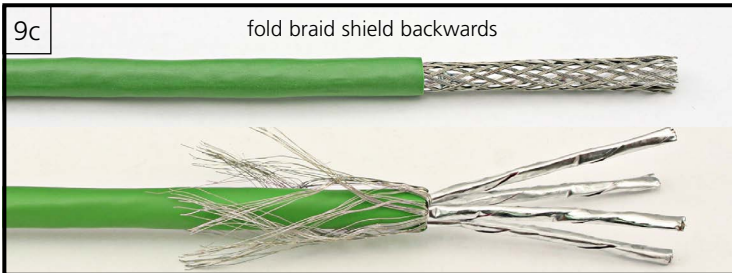
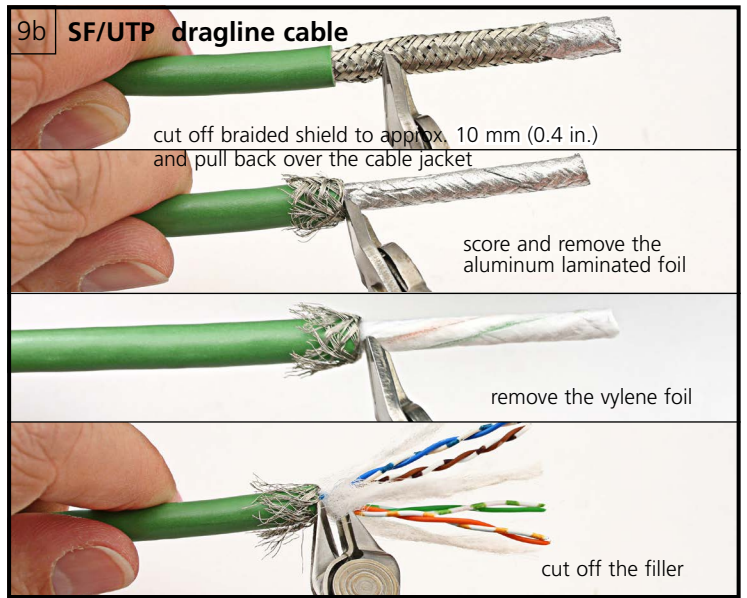
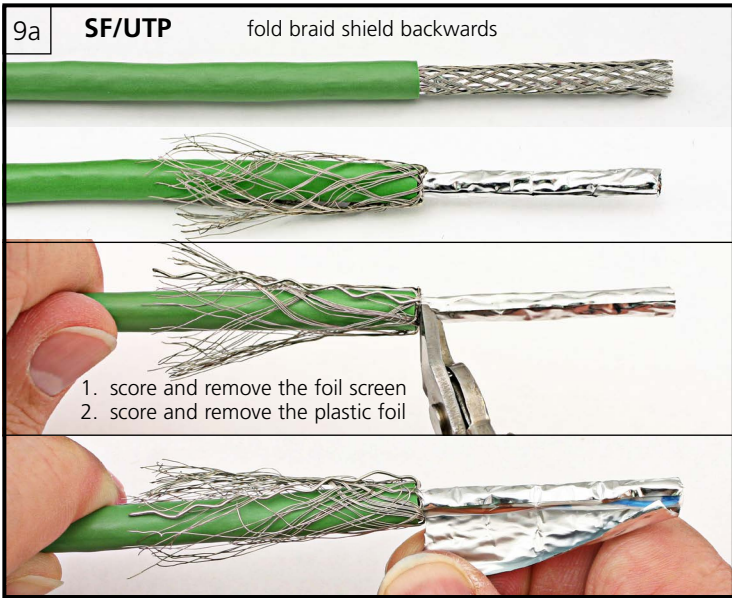
Stripping length min. 1.6 in.

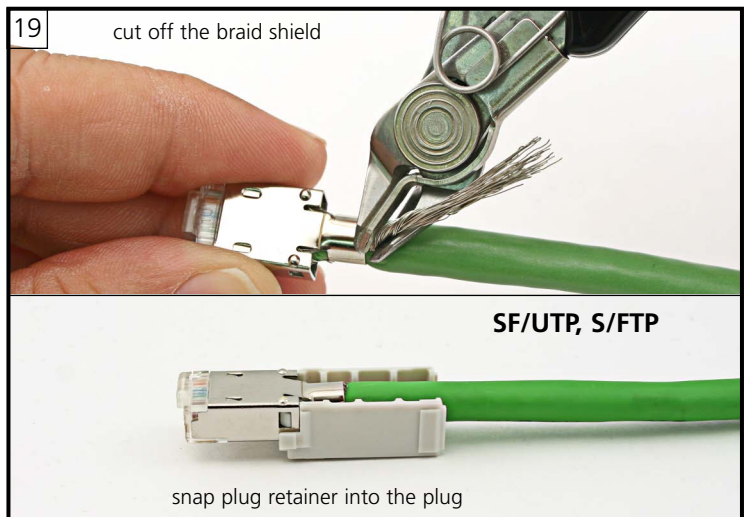
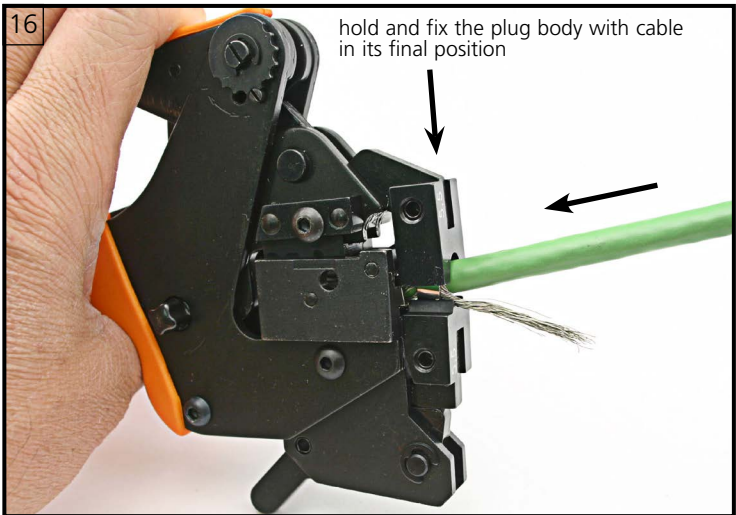
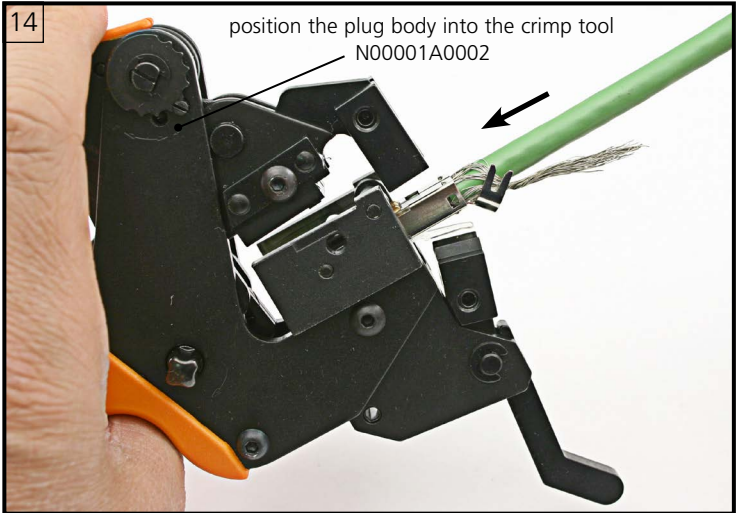
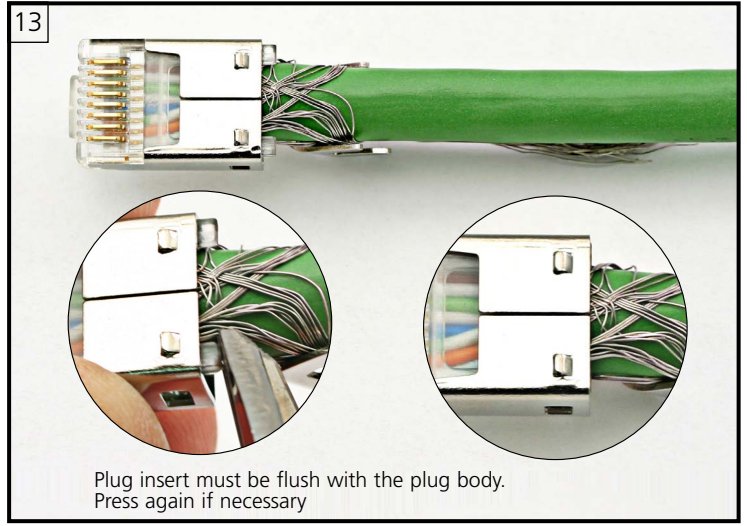
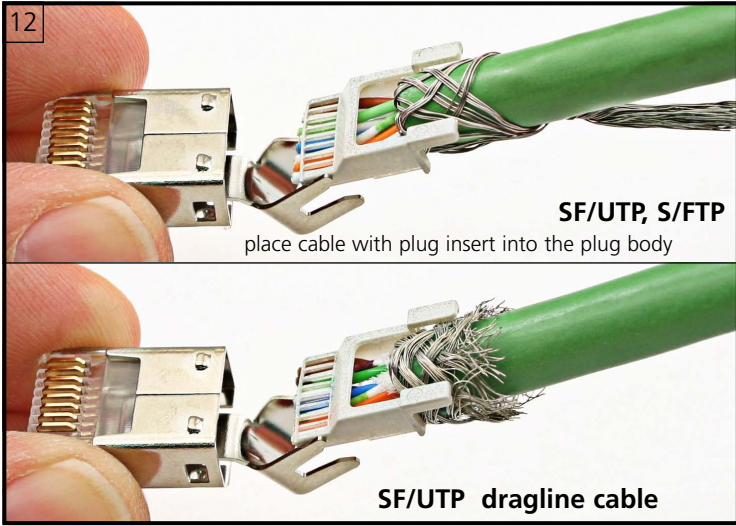
remove the cable jacket to approx. 1.6 in.

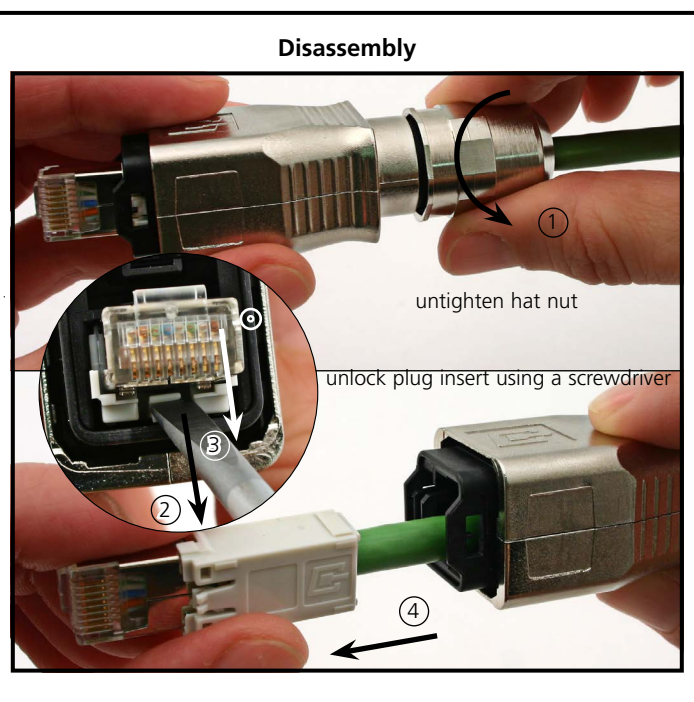
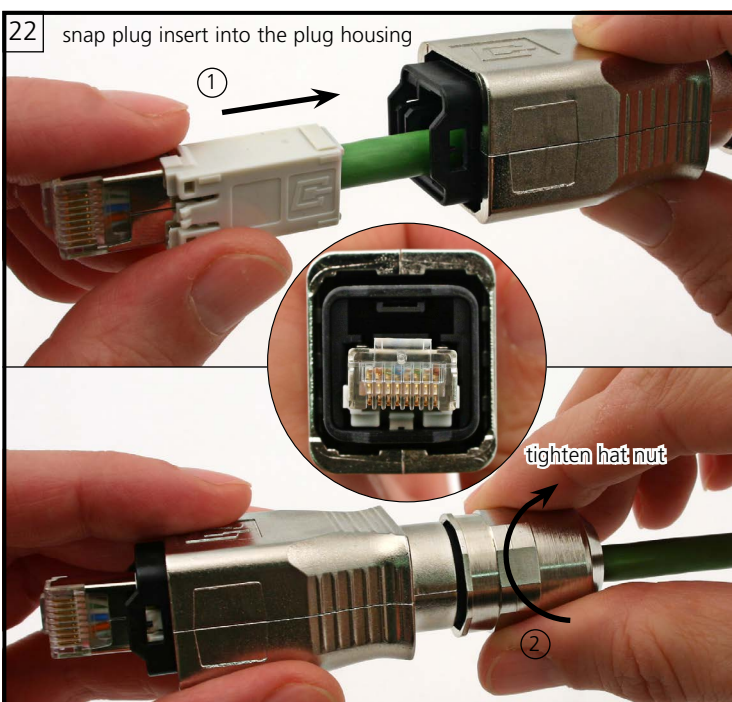
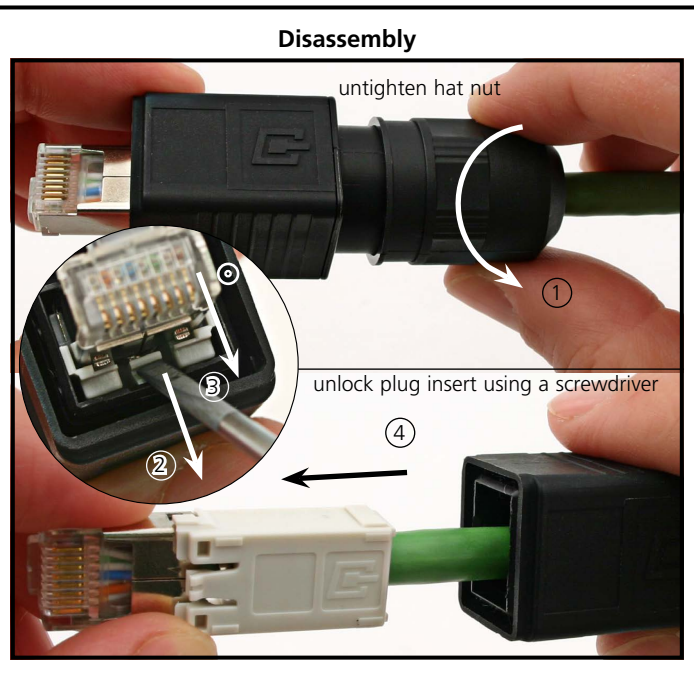
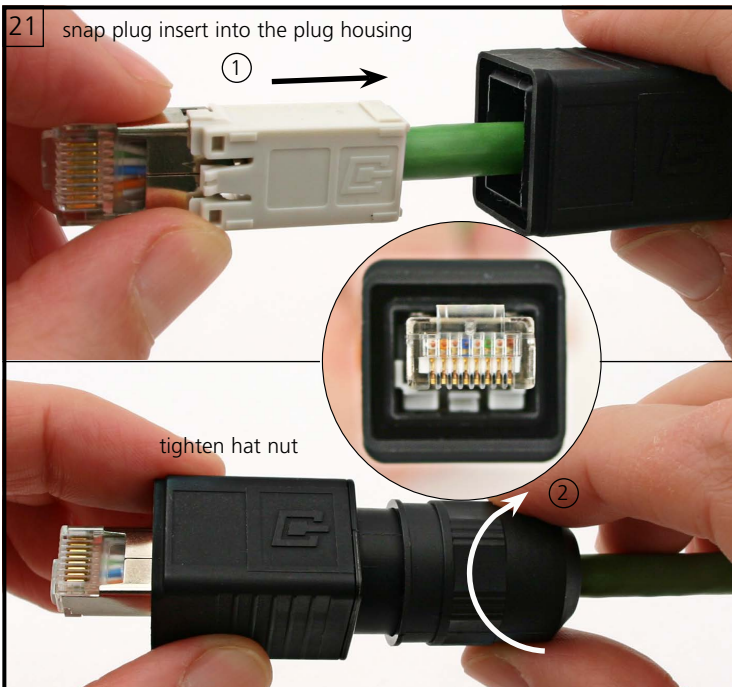
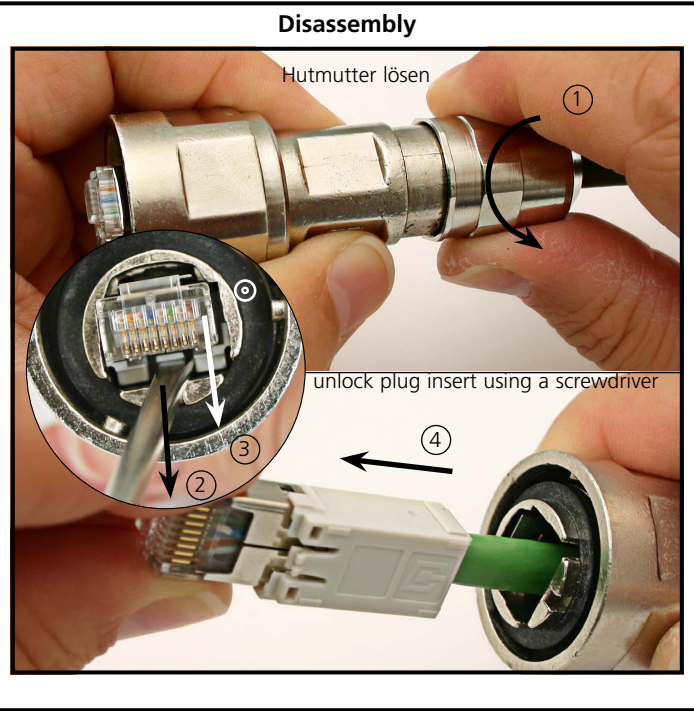
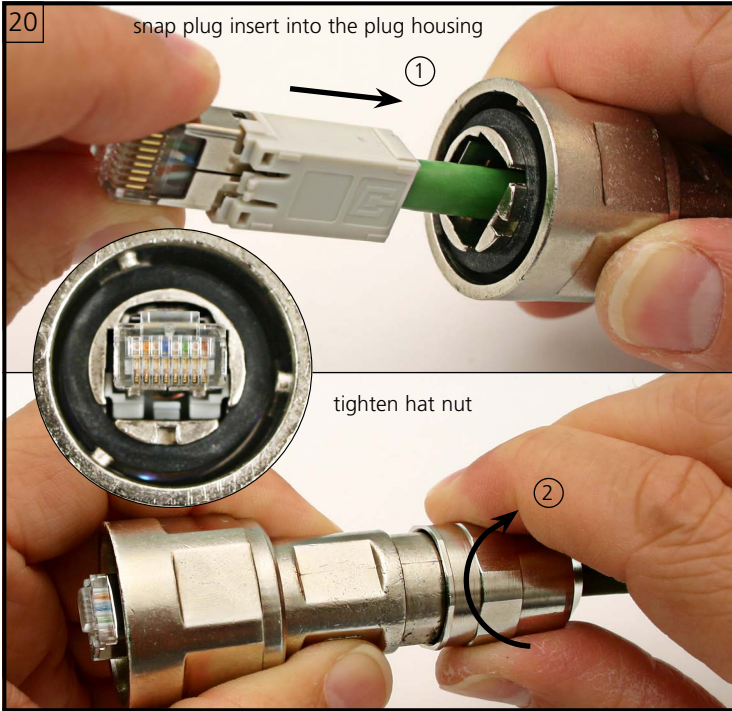
8

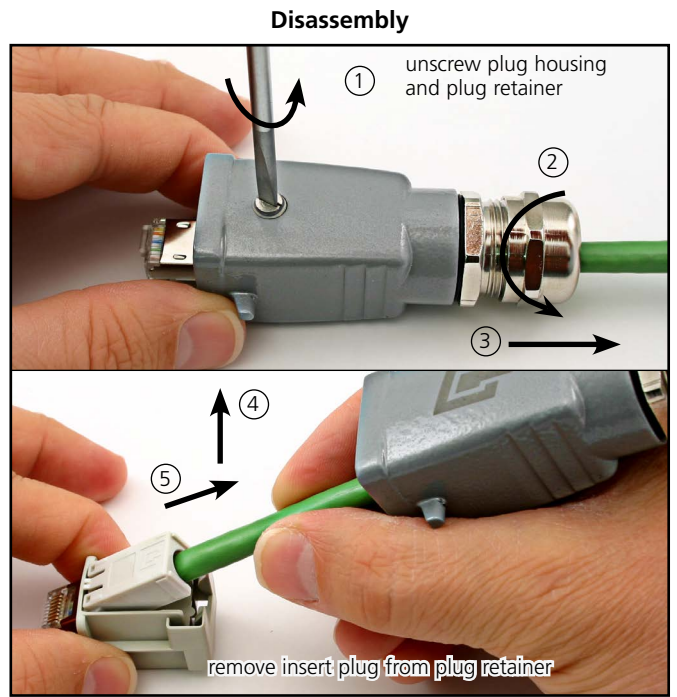
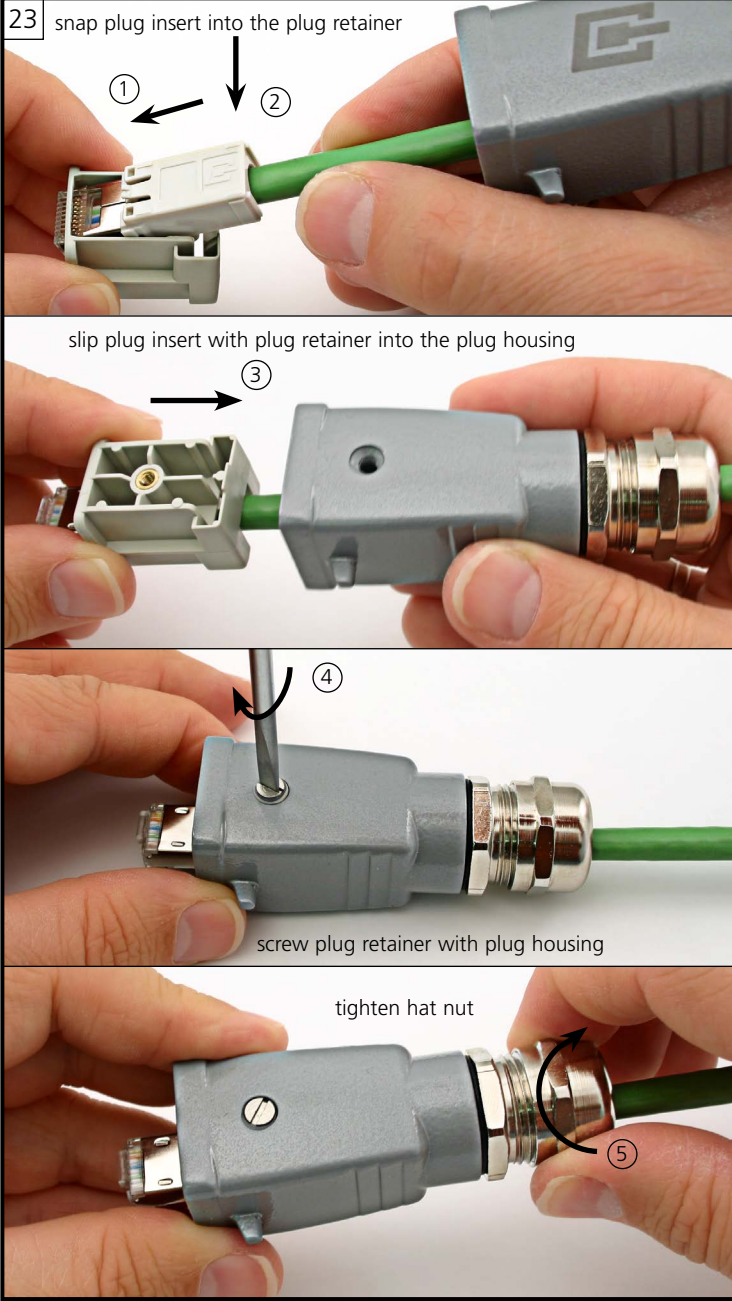
PIN assignments					Connection		Application				
RJ45 PIN No.	Colour code T568		DIN 47100	Industrial	1:1	1GBT crossover	RJ45 PIN No.	10BT/100BT	1Gigabit/10 Gigabit Ethernet	Token Ring ISDN/So	Upo/TEL
	A	B									
1	WH-GN	WH-OG	WH	YE	1-1	1-3	1	•	•		
2	GN	OG	BN	OG	2-2	2-6	2	•	•		
3	WH-OG	WH-GN	GN	WH	3-3	3-1	3	•		•	
4	BU	BU	YE	-	4-4	4-7	4		•		•
5	WH-BU	WH-BU	GY	-	5-5	5-8	5		•	•	•
6	OG	GN	PK	BU	6-6	6-2	6	•	•	•	
7	WH-BN	WH-BN	BU	-	7-7	7-4	7		•		
8	BN	BN	RD	-	8-8	8-5	8		•		

D 885030A0318b 3.02.2016© by Telegärtner • Druckfehler und technische Änderungen vorbehalten / Printing errors and technical changes reserved









Disassembly of plug

